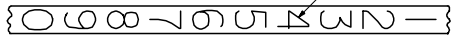
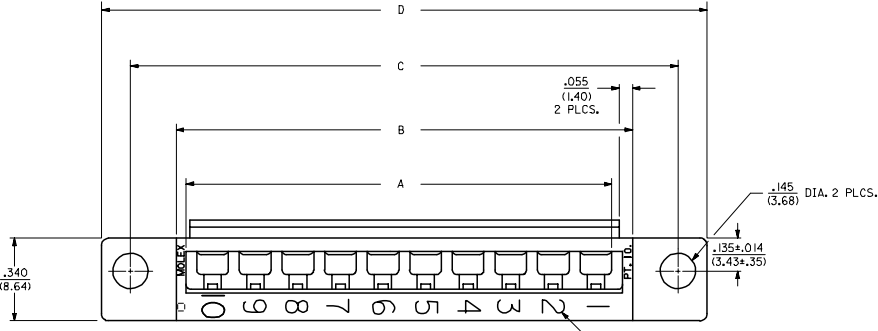
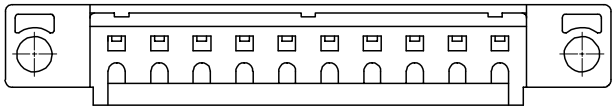
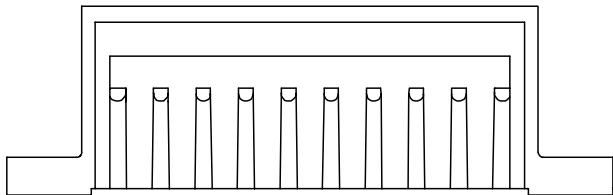
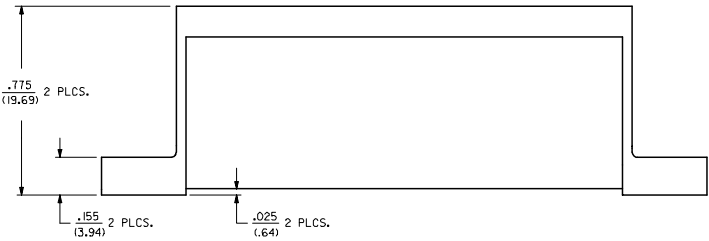
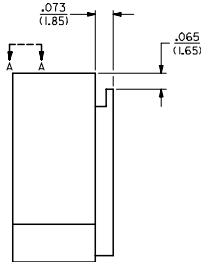


20 19 18 17 16 15 14 13 12 11 10 9 8 7 6 5 4 3 2 1

- NOTES:**
- △ THESE HOUSINGS ARE FOR USE WITH THE 1457-• TERMINALS AND MAY BE SUBDIVIDED BY USING THE 1461-K KEY.
 - △ THE HOUSINGS ARE ONLY AVAILABLE IN 5, 10, 15, AND 20 CIRCUIT SIZES.
 - △ PRODUCT SPECIFICATION PS 50-36 APPLIES.
 - △ THESE HOUSINGS CONFORM TO U.L. AND C.S.A. REQUIREMENTS.
 - △ .060/(1.52) HIGH RAISED NUMERALS.
 - △ .125/(3.18) HIGH RECESSED NUMERALS ON A MATTE BACKGROUND.
 - △ .09/(2.3) HIGH INK STAMPED NUMERALS.
- B. PACKAGE PER PK-1461-100.



VIEW A-A



4	01
3	0
2	01
1	0
SHT REV	

MODIFY CORE OUTS EC NO: UCP2005-2756 DRWNS: BARRA 2005/09/29 CHK: BARKER 2005/10/18 APPR: SHILLER 2005/10/12	QUALITY SYMBOLS	GENERAL TOLERANCES (UNLESS SPECIFIED)	DIMENSION STYLE	SCALE	DESIGN UNITS	THIRD ANGLE PROJECTION
	▽=0 ▽=0	mm INCH 4 PLACES ± --- ± --- 3 PLACES ± --- ± .010 2 PLACES ± 0.25 ± .014 1 PLACE ± 0.35 ± --- ANGULAR ± 1/2°	IN/MM DRAWN BY DATE AFG 91/02/18 CHECKED BY DATE RHR 91/02/18 APPROVED BY DATE GWF 91/02/18	4:1	INCH	TITLE HOUSING, COMMONING [.025/(.64) OFFSET]
	DRAFT WHERE APPLICABLE MUST REMAIN WITHIN DIMENSIONS	SEE TABLE	MATERIAL NO.	DOCUMENT NO.	MOLEX INCORPORATED SHEET NO. 1 OF 4	
	THIS DRAWING CONTAINS INFORMATION THAT IS PROPRIETARY TO MOLEX INCORPORATED AND SHOULD NOT BE USED WITHOUT WRITTEN PERMISSION					

19 18 17 16 15 14 13 12 11 10 9 8 7 6 5 4 3 2 1

PART NO.	ENG. NO.	NO. CKTS.	DIMENSIONS				CIRCUIT NUMERALS
			DIM. A	DIM. B	DIM. C	DIM. D	
07-01-7201	1461-20	20	3.50 (88.9)	3.63 (92.2)	4.00 (101.6)	4.24 (107.7)	11 THRU 20
07-01-7151	1461-15	15	2.62 (66.5)	2.75 (69.9)	3.13 (79.5)	3.37 (85.6)	21 THRU 30
07-01-7101	1461-10	10	1.750 (44.45)	1.875 (47.63)	2.250 (57.15)	2.49 (63.2)	16 THRU 30
07-01-7051	1461-5	5	.875 (22.23)	1.000 (25.40)	1.375 (34.93)	1.615 (41.02)	46 THRU 60

SPECIAL NUMBERED HOUSINGS CHART							
PART NO.	ENG. NO.	NO. CKTS.	CIRCUIT NUMERALS				
07-01-7202	1461-20-1	20	21 THRU 40				
07-01-7203	1461-20-2	20	41 THRU 60				
07-01-7204	1461-20-3	20	61 THRU 80				

INK STAMPED HOUSINGS								
BEFORE INK STAMP	AFTER INK STAMP	BEFORE INK STAMP	AFTER INK STAMP	NO. CKTS.	DIM. A	DIM. B	DIM. C	DIM. D
007-01-7206	1461-20B	007-01-7207	1461-20C	20	3.50 (88.9)	3.63 (92.2)	4.00 (101.6)	4.24 (107.7)
007-01-7156	1461-15B	007-01-7157	1461-15C	15	2.62 (66.5)	2.75 (69.9)	3.13 (79.5)	3.37 (85.6)
007-01-7106	1461-10B	007-01-7107	1461-10C	10	1.750 (44.45)	1.875 (47.63)	2.250 (57.15)	2.49 (63.2)
007-01-7056	1461-5B	007-01-7057	1461-5C	5	.875 (22.23)	1.000 (25.40)	1.375 (34.93)	1.615 (41.02)

SPECIAL INK STAMPED HOUSINGS CHART								
BEFORE INK STAMP	AFTER INK STAMP	NO. CKTS.	CIRCUIT NUMERALS					
007-01-7206	1461-20B	007-01-7208	1461-20-1C	20	3.50 (88.9)	3.63 (92.2)	4.00 (101.6)	4.24 (107.7)
007-01-7156	1461-15B	007-01-7159	1461-15-2C	15	2.62 (66.5)	2.75 (69.9)	3.13 (79.5)	3.37 (85.6)
007-01-7106	1461-10B	007-01-7160	1461-10-3C	10	1.750 (44.45)	1.875 (47.63)	2.250 (57.15)	2.49 (63.2)
007-01-7056	1461-5B	007-01-7160	1461-5-3C	5	.875 (22.23)	1.000 (25.40)	1.375 (34.93)	1.615 (41.02)

LINE	REV	DESCRIPTION	DATE	BY	CHKD
1		ISSUED FOR MANUFACTURE			
2		REVISED			
3		REVISED			
4		REVISED			
5		REVISED			
6		REVISED			
7		REVISED			
8		REVISED			
9		REVISED			
10		REVISED			
11		REVISED			
12		REVISED			
13		REVISED			
14		REVISED			
15		REVISED			
16		REVISED			
17		REVISED			
18		REVISED			
19		REVISED			
20		REVISED			

HOUSING, COMMUNING
 [1025/1484] (OFF SHEET)
 CHART 30-1461
 DATE 03/22/91
 BY: []
 CHECKED: []
 APPROVED: []
 TITLE: []
 PART NO.: []
 ENG. NO.: []
 NO. CKTS.: []
 DIM. A: []
 DIM. B: []
 DIM. C: []
 DIM. D: []